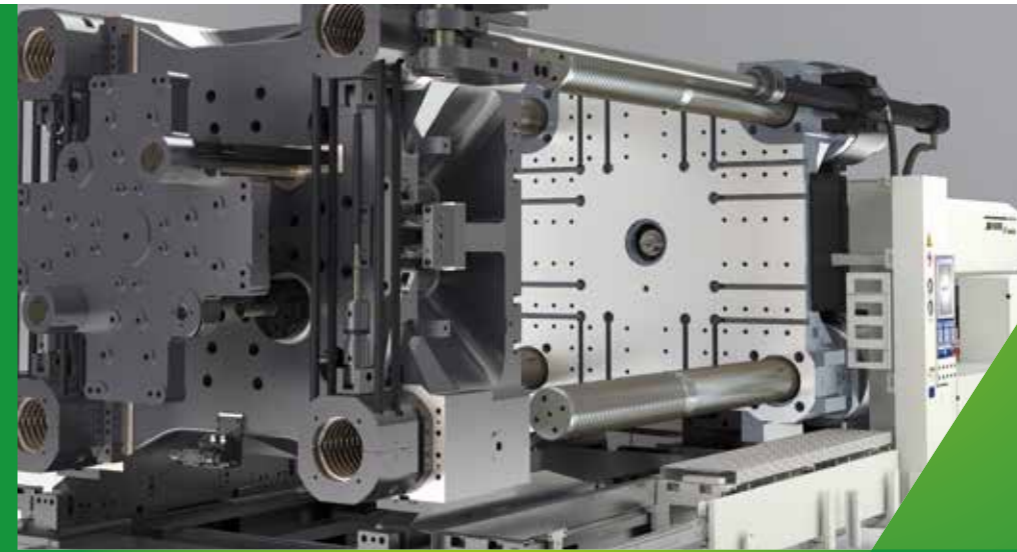


**HAITIAN PLASTICS MACHINERY GROUP CO., LTD**  
No. 1688 Haitian Road, Xiaogang, Beilun, Ningbo, P. R. China.  
+ 86-574-8617 7005 (China)  
+ 86-574-8617 7242 (International)  
haitian@mail.haitian.com  
www.haitianpm.com

**NINGBO HAITIAN HUAYUAN MACHINERY CO.,LTD.**  
No.1, Nanhuan Road, Export Processing Zone, Beilun, Ningbo, Zhejiang, 315806 P.R. China  
+86-574-8617 7242  
+86-574-8622 1864  
haitian@mail.haitian.com  
www.haitianpm.com



SE



## HAITIAN JU/SE SERIES

Servo hydraulic two-platen solution  
4,500 - 40,000 kN

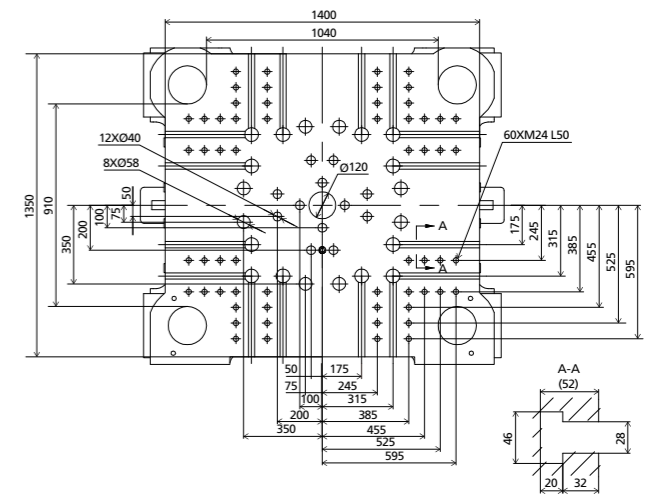
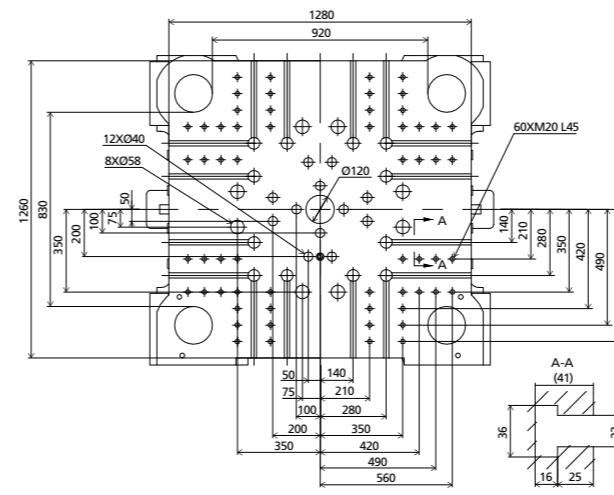
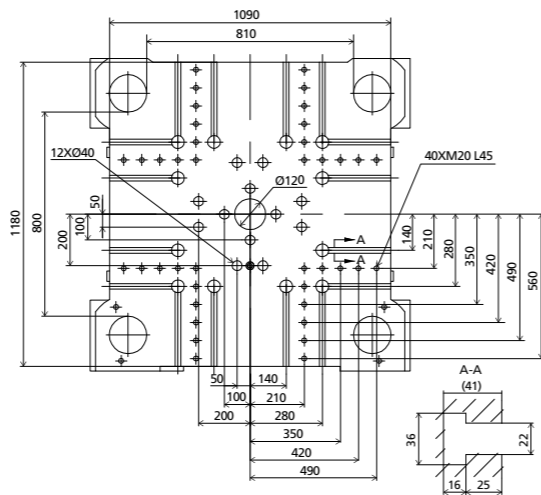
HT 202.10611-CV



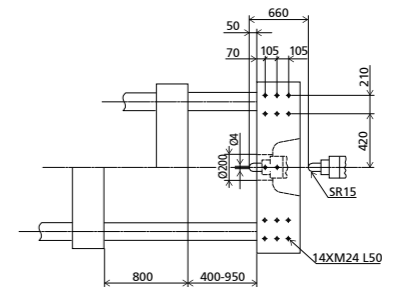
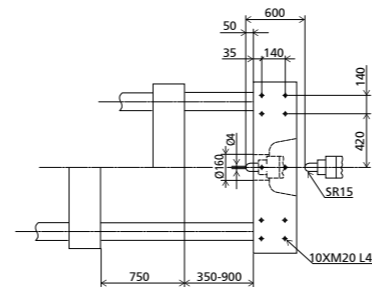
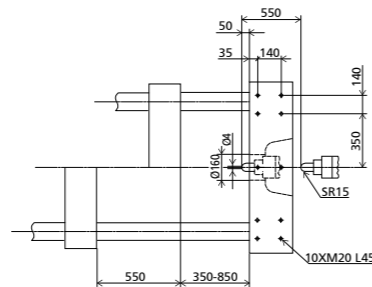
# SPECIFICATIONS

		JU4500/2400SE				JU5500/3100SE				JU6500/4300SE			
		A	B	C	D	A	B	C	D	A	B	C	D
<b>INJECTION UNIT</b>													
Screw diameter	mm	65	70	75	80	70	80	85	90	80	85	90	100
Screw L/D ratio	L/D	21.5	20	18.7	17.5	22.9	20	18.9	17.8	22	20.7	19.6	17.6
Injection volume (theoretical)	cm <sup>3</sup>	1068	1239	1423	1619	1424	1860	2100	2354	2212	2497	2799	3456
Injection weight (PS)	g	972	1128	1295	1473	1296	1692	1911	2142	2013	2272	2547	3145
Injection rate	g/s	304	353	405	461	383	501	565	634	492	555	623	769
Injection pressure	MPa	223	192	167	147	218	167	148	132	193	171	153	124
Plasticizing rate (GPPS) <sup>①</sup>	g/s	60.0	68.8	77.8	86.4	71.2	93.8	103	116	73.6	81.4	92.6	113
Plasticizing rate (HDPE) <sup>②</sup>	g/s	85.7	102	114	129	102	137	155	179	107	118	134	165
Screw speed	rpm	225				220				165			
<b>CLAMPING UNIT</b>													
Clamping force	kN	4500				5500				6500			
Dist. between tie bars (HxV)	mm	810x800				920x830				1040x910			
Mold height max.	mm	850				900				950			
Mold height min.	mm	350				350				400			
Ejector stroke	mm	250				250				250			
Ejector force	kN	110				110				110			
Max. daylight	mm	1400				1650				1750			
Mold opening stroke <sup>③</sup>	mm	1050/550				1300/750				1350/800			
Max. mold weight <sup>④</sup>	t	6.5				8				9.5			
<b>OTHERS</b>													
Pump motor power	kW	45				55				65			
Heater power	kW	33				39				48			
Machine dimension (LxWxH) <sup>⑤</sup>	m	6.87x2.17x2.34				7.20x2.35x2.37				7.74x2.58x2.67			
Machine weight	t	18				21				24			
Hopper capacity (Options)	kg	50				50				100			
Oil tank <sup>⑥</sup>	l	450				520				590			

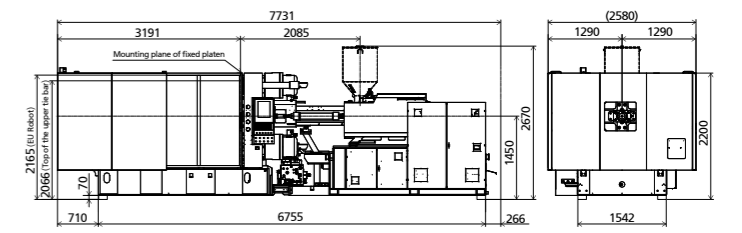
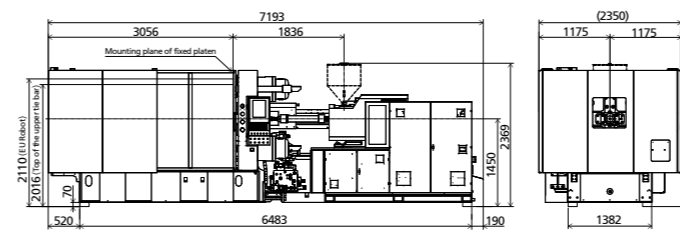
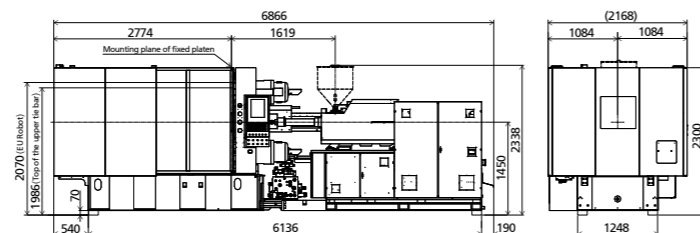
**Platen dimensions**  
Moving platen



**Platen dimensions**  
Mounting hole for robot/sprue picker top view from fixed platen



**Machine dimensions**



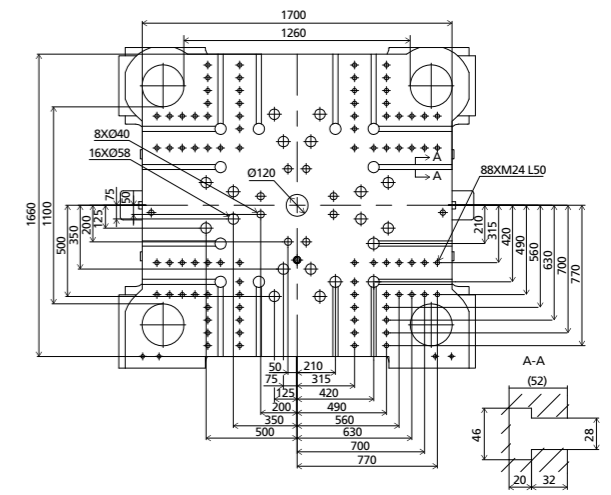
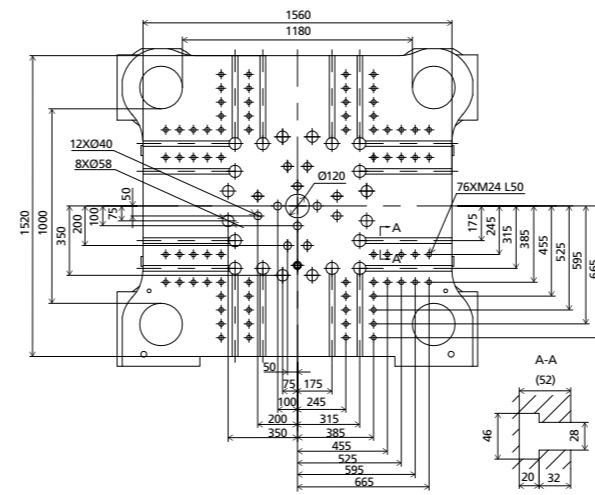
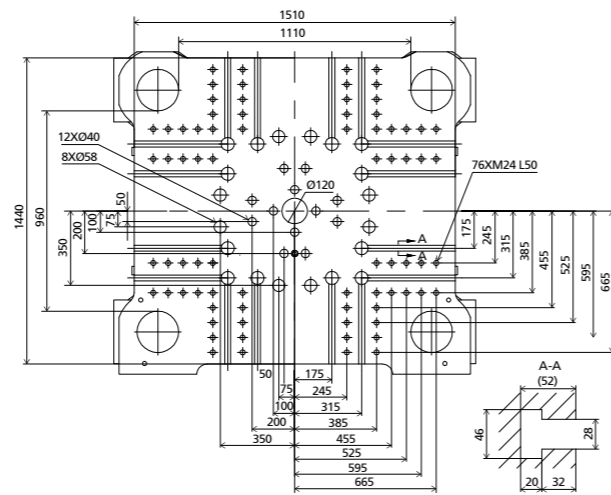
NOTE: ① Plasticizing capacity (GPPS): GB standard, with application of GPPS plasticizing capacity of 3-zone screws.  
② Plasticizing capacity (HDPE): Euromap 19, with application of HDPE plasticizing capacity of barrier screws The above plasticizing capacity is for reference only.  
③ with min. mold height / with max. mold height.

④ moving platen: 2/3 of max. mold weight.  
⑤ The size is the net size of the machine, excluding the width of feeding platform stair and the width of operating platform.  
⑥ The oil tank volume refers to the volume of the oil tank itself, excluding the volume in cylinder and pipeline. In this sense, the customer is advised to prepare the hydraulic oil according to 1.35 times of the oil tank volume.

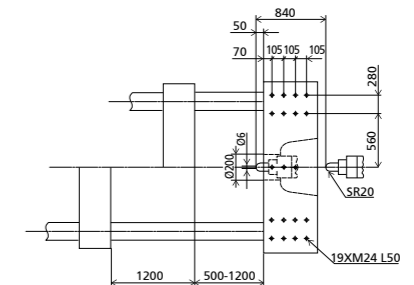
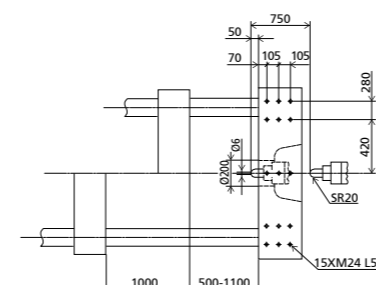
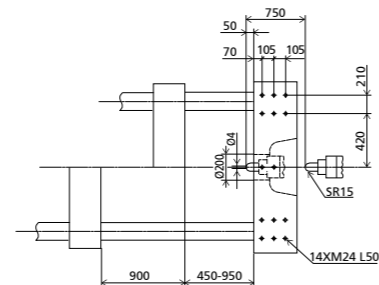
# SPECIFICATIONS

		JU7500/5050SE				JU9000/6500SE				JU10800/8550SE			
		A	B	C	D	A	B	C	D	A	B	C	D
<b>INJECTION UNIT</b>													
Screw diameter	mm	80	90	100	110	90	100	110	120	100	110	120	130
Screw L/D ratio	L/D	24.8	22	19.8	18	24.4	22	20	18.3	24.2	22	20.2	18.6
Injection volume (theoretical)	cm <sup>3</sup>	2262	2863	3534	4276	2990	3691	4467	5316	4006	4847	5768	6769
Injection weight (PS)	g	2058	2605	3216	3892	2721	3359	4065	4837	3645	4410	5249	6160
Injection rate	g/s	484	612	756	915	569	703	850	1012	713	863	1027	1205
Injection pressure	MPa	223	176	143	118	218	176	146	122	213	176	148	126
Plasticizing rate (GPPS) <sup>①</sup>	g/s	73.3	92.0	113	133	89.5	110	130	152	101	121	140	161
Plasticizing rate (HDPE) <sup>②</sup>	g/s	108	137	169	199	132	162	193	224	147	177	201	231
Screw speed	rpm	150				135				116			
<b>CLAMPING UNIT</b>													
Clamping force	kN	7500				9000				10800			
Dist. between tie bars (HxV)	mm	1110x960				1180x1000				1260x1100			
Mold height max.	mm	950				1100				1200			
Mold height min.	mm	450				500				500			
Ejector stroke	mm	300				300				350			
Ejector force	kN	195				195				230			
Max. daylight	mm	1850				2100				2400			
Mold opening stroke <sup>③</sup>	mm	1400/900				1600/1000				1900/1200			
Max. mold weight <sup>④</sup>	t	11				13				16			
<b>OTHERS</b>													
Pump motor power	kW	75				85				112			
Heater power	kW	54				71				83			
Machine dimension (LxWxH) <sup>⑤</sup>	m	8.54x2.86x2.69				9.12x3.12x2.84				9.78x3.20x2.85			
Machine weight	t	28				35				42			
Hopper capacity (Options)	kg	100				100				100			
Oil tank <sup>⑥</sup>	l	730				830				910			

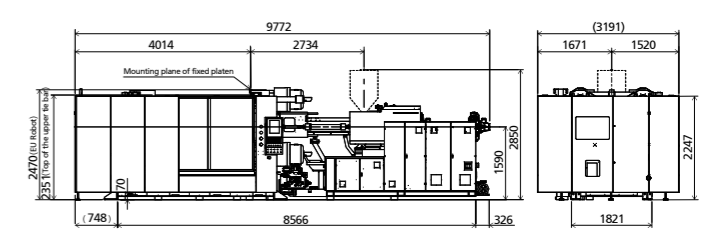
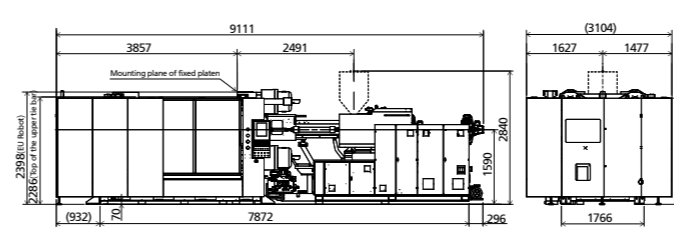
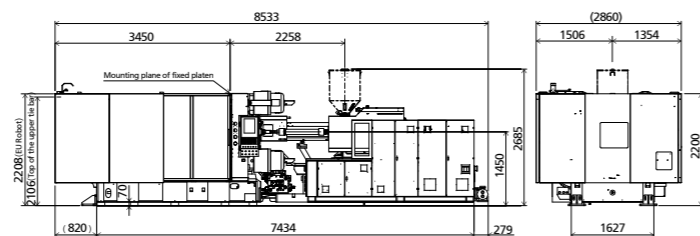
**Platen dimensions**  
Moving platen



**Platen dimensions**  
Mounting hole for robot/sprue picker top view from fixed platen



**Machine dimensions**



NOTE: ① Plasticizing capacity (GPPS): GB standard, with application of GPPS plasticizing capacity of 3-zone screws.  
② Plasticizing capacity (HDPE): Euromap 19, with application of HDPE plasticizing capacity of barrier screws The above plasticizing capacity is for reference only.  
③ with min. mold height / with max. mold height.

④ moving platen: 2/3 of max. mold weight.  
⑤ The size is the net size of the machine, excluding the width of feeding platform stair and the width of operating platform.  
⑥ The oil tank volume refers to the volume of the oil tank itself, excluding the volume in cylinder and pipeline. In this sense, the customer is advised to prepare the hydraulic oil according to 1.35 times of the oil tank volume.

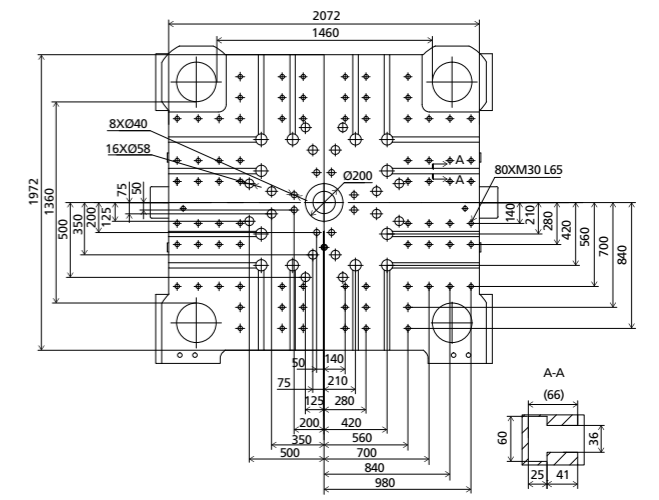
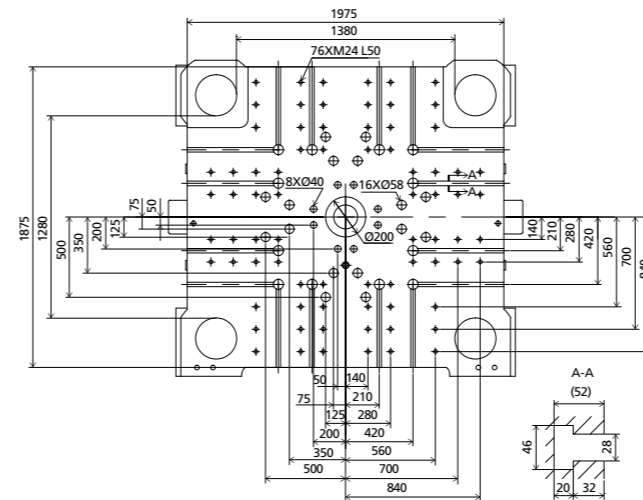
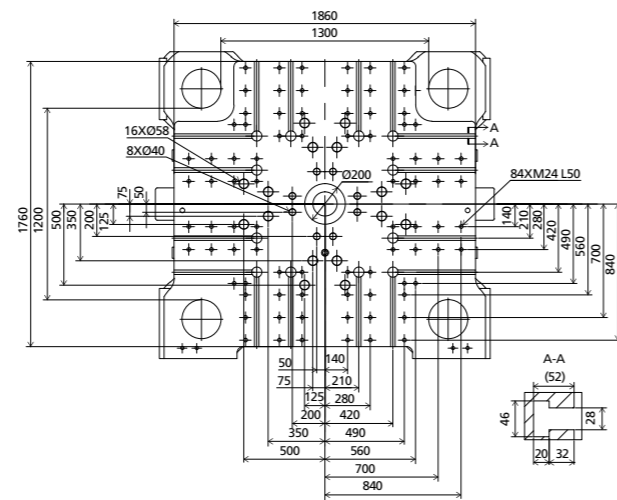
We reserve the right to make changes as a result of further technical advantages.

# SPECIFICATIONS

		JU12000/8550SE				JU13000/11200SE				JU14000/11200SE			
INJECTION UNIT		A	B	C	D	A	B	C	D	A	B	C	D
Screw diameter	mm	100	110	120	130	110	120	130	140	110	120	130	140
Screw L/D ratio	L/D	24.2	22	20.2	18.6	26.2	24	22.2	20.6	26.2	24	22.2	20.6
Injection volume (theoretical)	cm <sup>3</sup>	4006	4847	5768	6769	5227	6220	7300	8467	5227	6220	7300	8467
Injection weight (PS)	g	3645	4410	5249	6160	4756	5661	6643	7705	4756	5661	6643	7705
Injection rate	g/s	713	863	1027	1205	784	933	1095	1269	784	933	1095	1269
Injection pressure	MPa	213	176	148	126	214	180	153	132	214	180	153	132
Plasticizing rate (GPPS) <sup>①</sup>	g/s	101	121	140	161	123	142	164	187	123	142	164	187
Plasticizing rate (HDPE) <sup>②</sup>	g/s	147	177	201	231	187	217	240	273	187	217	240	273
Screw speed	rpm	116				105				105			
CLAMPING UNIT													
Clamping force	kN	12000				13000				14000			
Dist. between tie bars (HxV)	mm	1300x1200				1380x1280				1460x1360			
Mold height max.	mm	1250				1350				1450			
Mold height min.	mm	600				600				700			
Ejector stroke	mm	350				350				400			
Ejector force	kN	230				230				330			
Max. daylight	mm	2650				2850				3050			
Mold opening stroke <sup>③</sup>	mm	2050/1400				2250/1500				2350/1600			
Max. mold weight <sup>④</sup>	t	20				23				27			
OTHERS													
Pump motor power	kW	112				130				130			
Heater power	kW	83				104				104			
Machine dimension (LxWxH) <sup>⑤</sup>	m	10.07x3.26x2.91				11.23x3.36x3.19				11.60x3.44x3.27			
Machine weight	t	47				55				62			
Hopper capacity (Options)	kg	100				100				100			
Oil tank <sup>⑥</sup>	l	910				1250				1250			

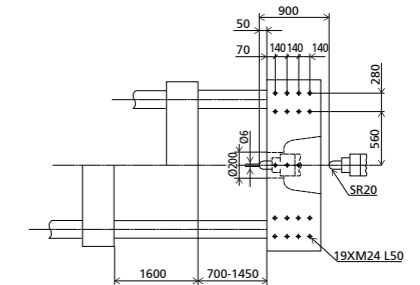
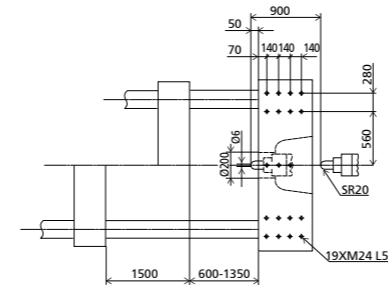
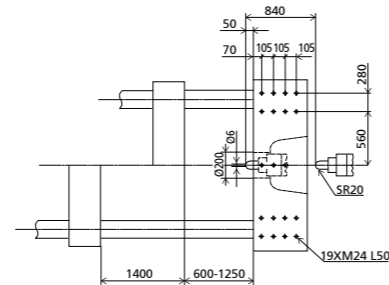
### Platen dimensions

Moving platen

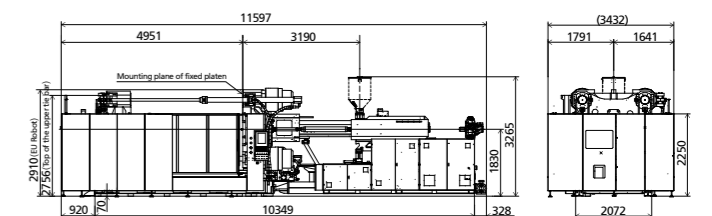
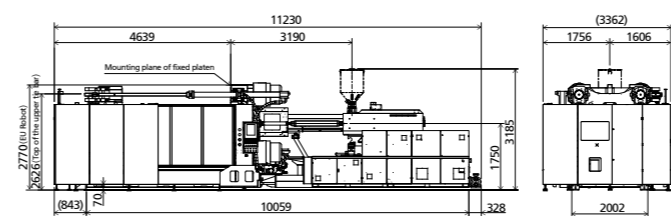
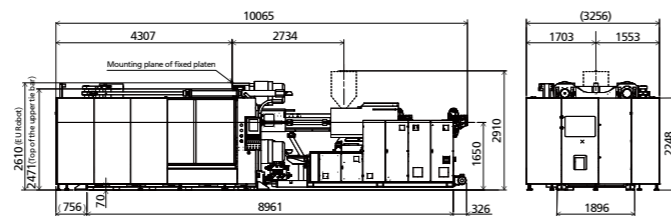


### Platen dimensions

Mounting hole for robot/sprue picker top view from fixed platen



### Machine dimensions



NOTE: ① Plasticizing capacity (GPPS): GB standard, with application of GPPS plasticizing capacity of 3-zone screws.

② Plasticizing capacity (HDPE): Euromap 19, with application of HDPE plasticizing capacity of barrier screws The above plasticizing capacity is for reference only.

③ with min. mold height / with max. mold height.

④ moving platen: 2/3 of max. mold weight.

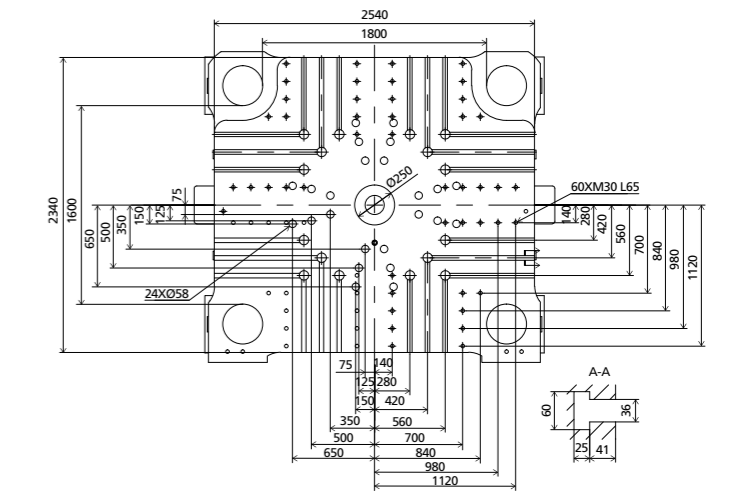
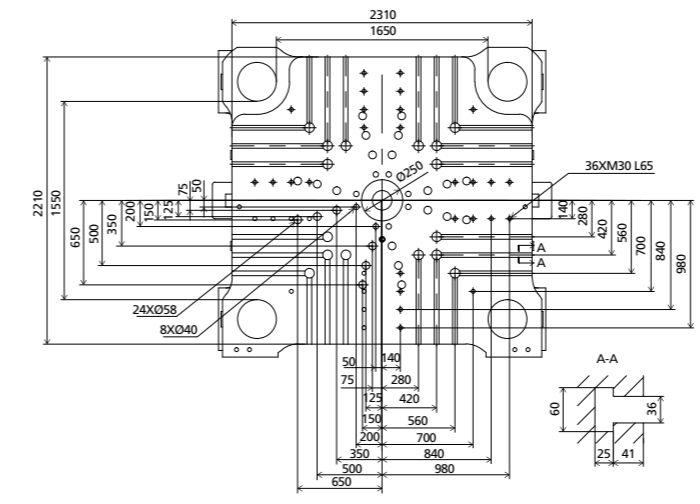
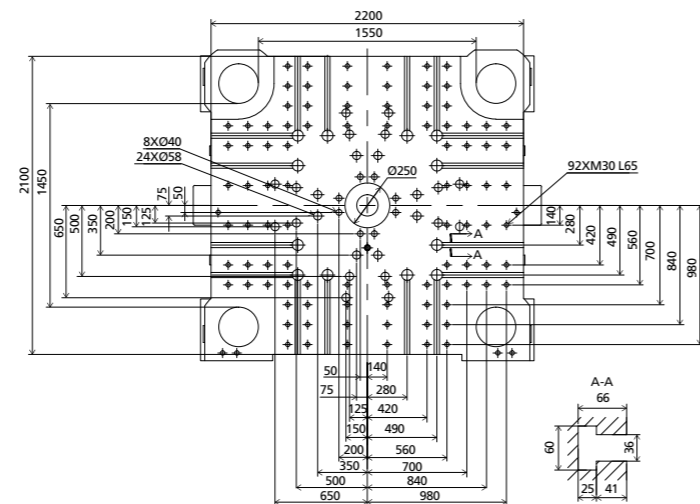
⑤ The size is the net size of the machine, excluding the width of feeding platform stair and the width of operating platform.

⑥ The oil tank volume refers to the volume of the oil tank itself, excluding the volume in cylinder and pipeline. In this sense, the customer is advised to prepare the hydraulic oil according to 1.35 times of the oil tank volume.

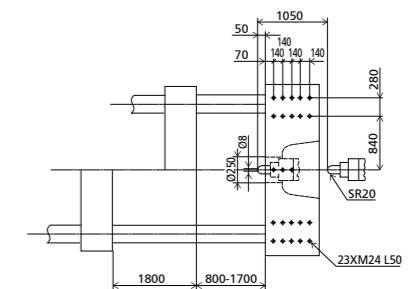
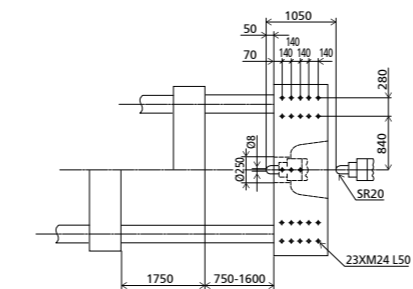
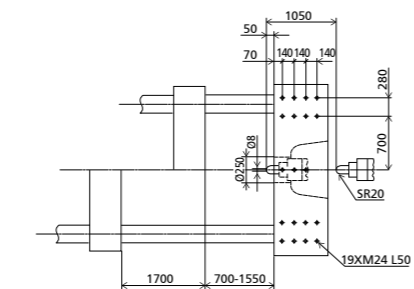
# SPECIFICATIONS

		JU16000/16600SE			JU18500/16600SE			JU21000/20200SE			
		A	B	C	A	B	C	A	B	C	D
<b>INJECTION UNIT</b>											
Screw diameter	mm	130	140	150	130	140	150	140	150	160	170
Screw L/D ratio	L/D	24	22.3	20.8	24	22.3	20.8	24	22.4	21	19.8
Injection volume (theoretical)	cm <sup>3</sup>	8362	9698	11133	8362	9698	11133	10468	12017	13672	15435
Injection weight (PS)	g	7610	8825	10131	7610	8825	10131	9526	10935	12442	14046
Injection rate	g/s	1184	1373	1576	1184	1373	1576	1302	1495	1701	1920
Injection pressure	MPa	199	171	149	199	171	149	193	168	148	131
Plasticizing rate (GPPS) <sup>①</sup>	g/s	168	192	220	168	192	220	155	176	196	222
Plasticizing rate (HDPE) <sup>②</sup>	g/s	252	283	336	252	283	336	243	294	303	334
Screw speed	rpm		102			102				85	
<b>CLAMPING UNIT</b>											
Clamping force	kN		16000			18500				21000	
Dist. between tie bars (HxV)	mm		1550x1450			1650x1550				1800x1600	
Mold height max.	mm		1550			1600				1700	
Mold height min.	mm		700			750				800	
Ejector stroke	mm		400			450				450	
Ejector force	kN		330			450				450	
Max. daylight	mm		3250			3350				3500	
Mold opening stroke <sup>③</sup>	mm		2550/1700			2600/1750				2700/1800	
Max. mold weight <sup>④</sup>	t		33			40				50	
<b>OTHERS</b>											
Pump motor power	kW		167			167				185	
Heater power	kW		116			116				133	
Machine dimension (LxWxH) <sup>⑤</sup>	m		12.38x3.64x4.38			12.58x3.85x4.52				12.91x3.97x4.34	
Machine weight	t		74			86				99	
Hopper capacity (Options)	kg		100			100				100	
Oil tank <sup>⑥</sup>	l		1550			1550				1750	

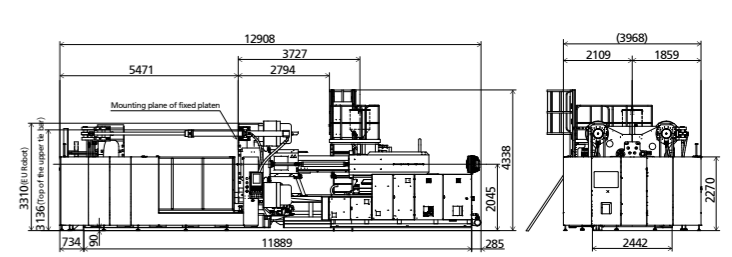
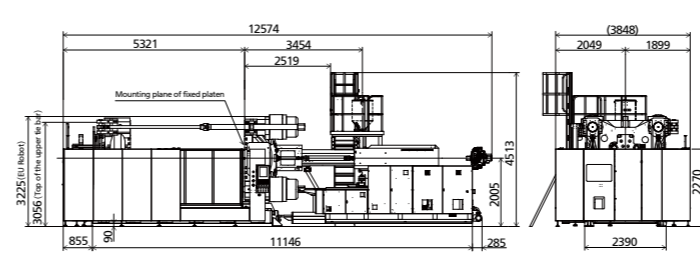
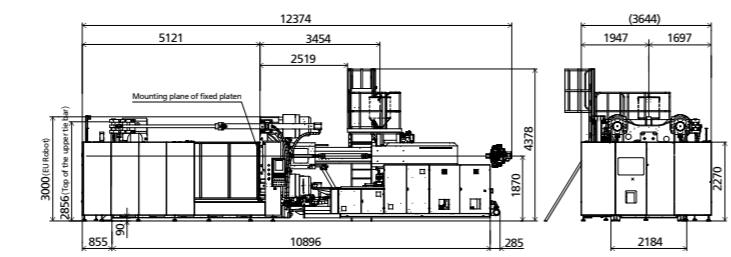
**Platen dimensions**  
Moving platen



**Platen dimensions**  
Mounting hole for robot/sprue picker top view from fixed platen



**Machine dimensions**



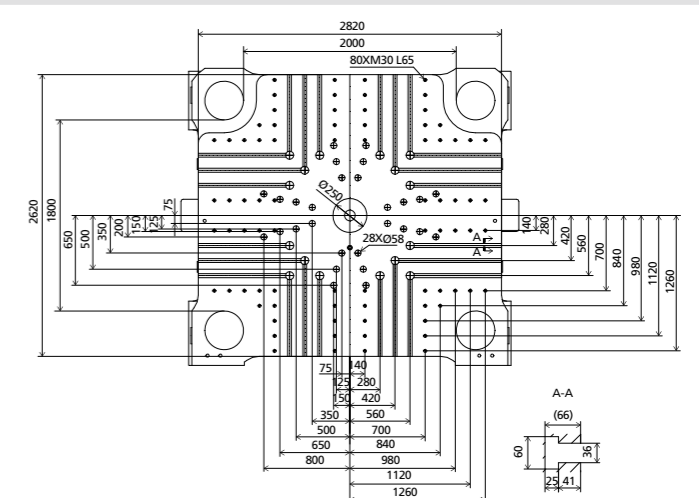
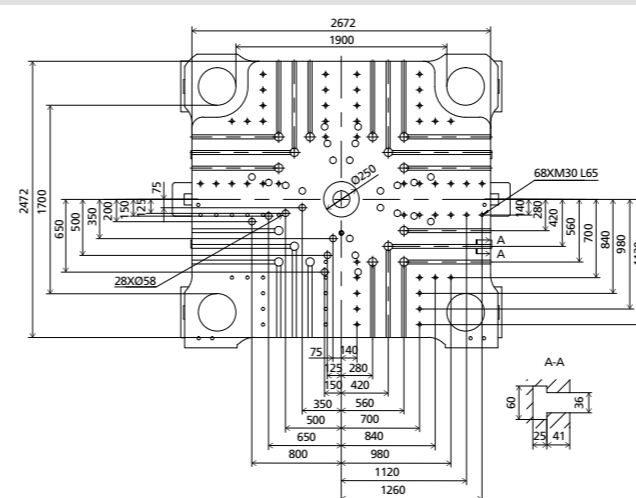
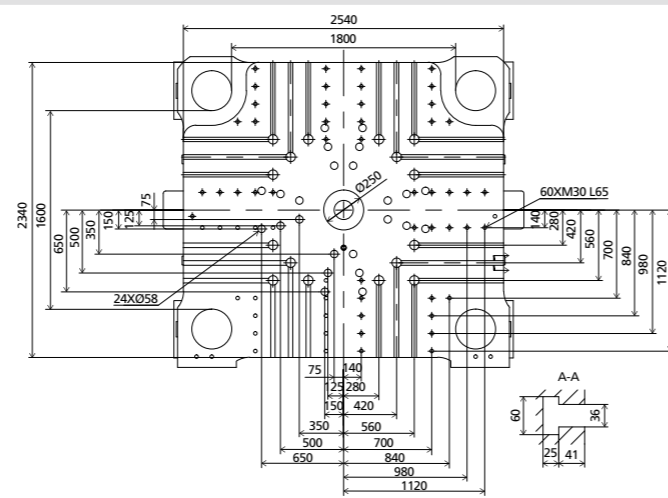
NOTE: ① Plasticizing capacity (GPPS): GB standard, with application of GPPS plasticizing capacity of 3-zone screws.  
② Plasticizing capacity (HDPE): Euromap 19, with application of HDPE plasticizing capacity of barrier screws The above plasticizing capacity is for reference only.  
③ with min. mold height / with max. mold height.

④ moving platen: 2/3 of max. mold weight.  
⑤ The size is the net size of the machine, excluding the width of feeding platform stair and the width of operating platform.  
⑥ The oil tank volume refers to the volume of the oil tank itself, excluding the volume in cylinder and pipeline. In this sense, the customer is advised to prepare the hydraulic oil according to 1.35 times of the oil tank volume.

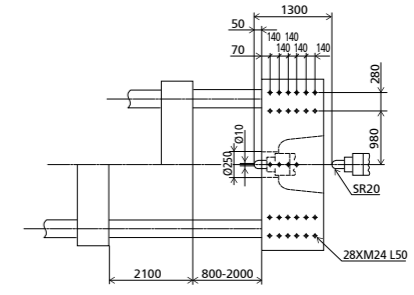
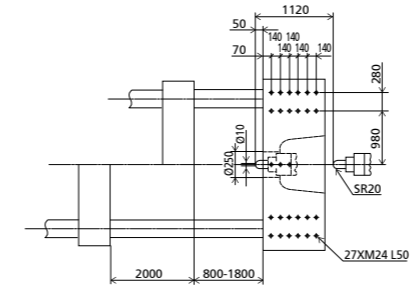
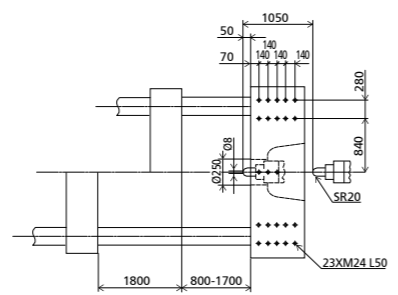
# SPECIFICATIONS

	JU21000/28900SE		JU24000/41000SE		JU28000/52000SE	
<b>INJECTION UNIT</b>						
Screw diameter	mm	A 160	B 170	A 170	B 185	200
Screw L/D ratio	L/D	24	22.6	23.5	21.6	20
Injection volume (theoretical)	cm <sup>3</sup>	17492	19747	23379	27687	35186
Injection weight (PS)	g	15918	17970	21275	25195	32019
Injection rate	g/s	1520	1716	1441	1707	2029
Injection pressure	MPa	165	147	174	147	148
Plasticizing rate (GPPS) <sup>①</sup>	g/s	--	--	--	--	--
Plasticizing rate (HDPE) <sup>②</sup>	g/s	330	365	309	320	380
Screw speed	rpm	280	310	70		70
<b>CLAMPING UNIT</b>						
Clamping force	kN	72 21000		24000		28000
Dist. between tie bars (HxV)	mm	1800x1600		1900x1700		2000x1800
Mold height max.	mm	1700		1800		2000
Mold height min.	mm	800		800		800
Ejector stroke	mm	450		500		500
Ejector force	kN	450		450		450
Max. daylight	mm	3500		3800		4100
Mold opening stroke <sup>③</sup>	mm	2700/1800		3000/2000		3300/2100
Max. mold weight <sup>④</sup>	t	50		59		66
<b>OTHERS</b>						
Pump motor power	kW	185		205		255
Heater power	kW	174		215		215
Machine dimension (LxWxH) <sup>⑤</sup>	m	13.90x3.97x4.35		15.15x4.19x4.46		15.97x4.28x4.42
Machine weight	t	103		127		148
Hopper capacity (Options)	kg	100		100		100
Oil tank <sup>⑥</sup>	l	1920		2390		2900

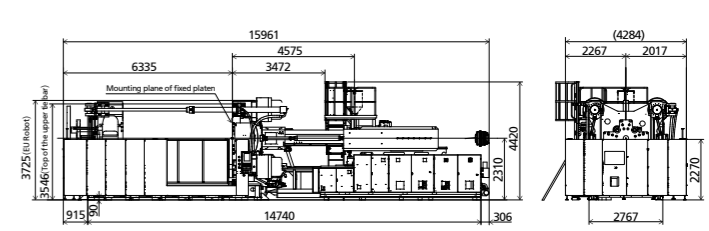
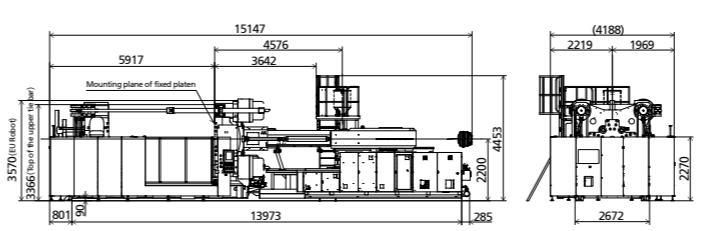
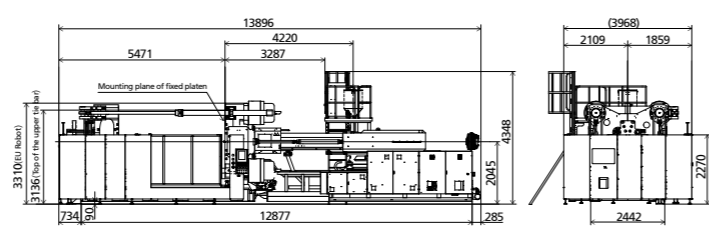
**Platen dimensions**  
Moving platen



**Platen dimensions**  
Mounting hole for robot/sprue picker top view from fixed platen



**Machine dimensions**

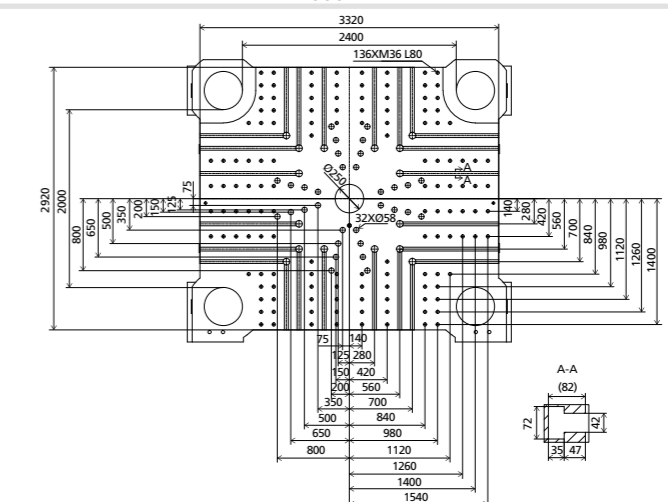
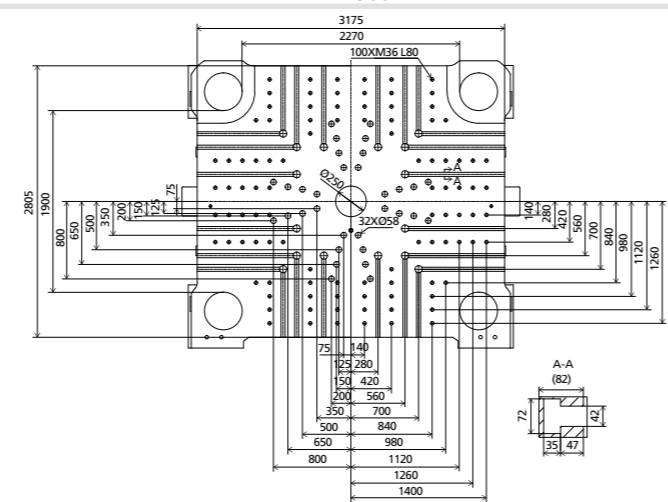


NOTE: ① Plasticizing capacity (GPPS): GB standard, with application of GPPS plasticizing capacity of 3-zone screws.  
 ② Plasticizing capacity (HDPE): Euromap 19, with application of HDPE plasticizing capacity of barrier screws The above plasticizing capacity is for reference only.  
 ③ with min. mold height / with max. mold height.  
 ④ moving platen: 2/3 of max. mold weight.  
 ⑤ The size is the net size of the machine, excluding the width of feeding platform stair and the width of operating platform.  
 ⑥ The oil tank volume refers to the volume of the oil tank itself, excluding the volume in cylinder and pipeline. In this sense, the customer is advised to prepare the hydraulic oil according to 1.35 times of the oil tank volume.

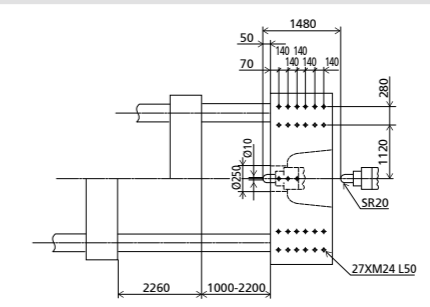
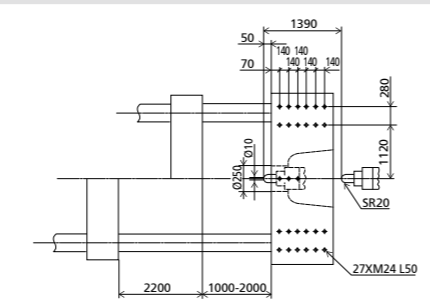
# SPECIFICATIONS

		JU33000/61000SE	JU40000/94000SE
<b>INJECTION UNIT</b>			
Screw diameter	mm	220	240
Screw L/D ratio	L/D	20.5	23
Injection volume (theoretical)	cm <sup>3</sup>	45616	60168
Injection weight (PS)	g	41510	54753
Injection rate	g/s	2243	2694
Injection pressure	MPa	134	156
Plasticizing rate (GPPS) <sup>①</sup>	g/s	--	--
Plasticizing rate (HDPE) <sup>②</sup>	g/s	370	470
Screw speed	rpm	53	50
<b>CLAMPING UNIT</b>			
Clamping force	kN	33000	40000
Dist. between tie bars (HxV)	mm	2270x1900	2400x2000
Mold height max.	mm	2000	2200
Mold height min.	mm	1000	1000
Ejector stroke	mm	550	550
Ejector force	kN	580	580
Max. daylight	mm	4200	4460
Mold opening stroke <sup>③</sup>	mm	3200/2200	3460/2260
Max. mold weight <sup>④</sup>	t	75	86
<b>OTHERS</b>			
Pump motor power	kW	255	375
Heater power	kW	223	290
Machine dimension (LxWxH) <sup>⑤</sup>	m	17.14x4.64x4.46	19.45x5.23x4.49
Machine weight	t	182	225
Hopper capacity (Options)	kg	100	100
Oil tank <sup>⑥</sup>	l	2900	4000

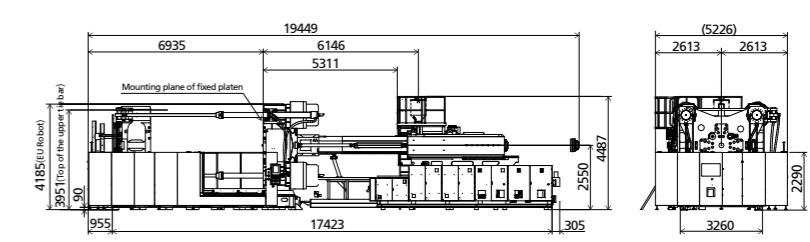
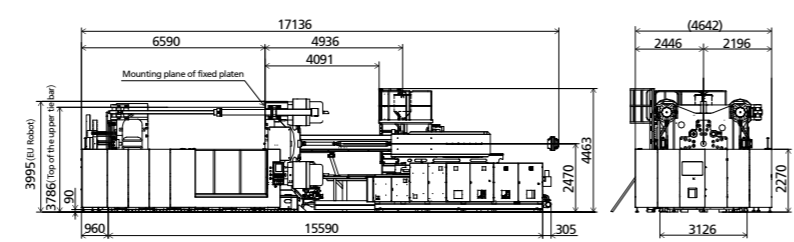
**Platen dimensions**  
Moving platen



**Platen dimensions**  
Mounting hole for robot/sprue picker top view from fixed platen



**Machine dimensions**



NOTE: ① Plasticizing capacity (GPPS): GB standard, with application of GPPS plasticizing capacity of 3-zone screws.  
 ② Plasticizing capacity (HDPE): Euromap 19, with application of HDPE plasticizing capacity of barrier screws The above plasticizing capacity is for reference only.  
 ③ with min. mold height / with max. mold height.  
 ④ moving platen: 2/3 of max. mold weight.  
 ⑤ The size is the net size of the machine, excluding the width of feeding platform stair and the width of operating platform.  
 ⑥ The oil tank volume refers to the volume of the oil tank itself, excluding the volume in cylinder and pipeline. In this sense, the customer is advised to prepare the hydraulic oil according to 1.35 times of the oil tank volume.